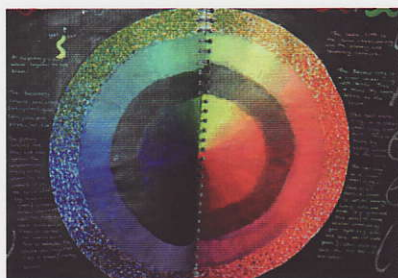




Farleys Yard Arts Awards

A Celebration of East Sussex Schools Visual Arts
Gardner Arts Centre, University of Sussex, Brighton

September 2006



BARCLAYS

Acknowledgments

Farleys Yard Trust gratefully acknowledges the support of:

BARCLAYS



Farleys Yard Trust wishes to thank Mark-it Jenners the Printers, 8, St Mary's Walk, Hailsham, BN27 1AF

Tel: 01323 441848 for the sponsorship of Printing the Awards Certificates and Invitations.

Farleys Yard Trust is indebted to the generosity of the following companies who have generously provided prizes for the exhibition awards:



seawhite
OF BRIGHTON

Suppliers of quality art and design materials, backed by a friendly personal service.

Allphotos Ltd

TEL : 01903 206893

Email sales@allphotos.net

Suppliers of quality materials and equipment from traditional to digital photography. Free delivery to educational establishments in the South East.



Oak specialists and hardwood floors.
01825 872025



Thames & Hudson

FRANCES LINCOLN

The Fabric Shop

High Street, Horam

TEL : 01435 813306

High Street Designer Curtain
and Upholstery fabric

WWW.PINEANDOAKCENTRE.CO.UK

Holmes Hill Furniture
Holmes Hill Estate
Holmes Hill
East Sussex BN8 6JA
Telephone 01825 873607

On behalf of the Farleys Yard Trust, it is with the greatest of pleasure and a deal of pride that I pay tribute to all those who held faith in our initial vision, and without whose support none of this could come to be. I am thinking of many individuals, leading businesses, and East Sussex County Council, Wealden District Council and Arts Council South East.

This exhibition, the first of its kind in East Sussex, would not have taken place without the dedication, time and effort of members of the working party whose names are recorded below and the generosity of our sponsor Barclays Bank

We are particularly indebted to the generosity of our benefactors - companies, local and national - who have so magnificently provided prizes in the category awards.

Our particular thanks go to those committed teachers who attended so many meetings of the Farleys Yard Arts Working Party, and gave freely of their advice and time in helping shape the Farleys Yard Arts Awards. They, together with participating schools, become founder members of the Associate Schools Group:

Rachel Johnson	Deputy Head of Art Uckfield Community College
Chris Mansell	Visual Arts Co-ordinator Sussex Downs College
Julie Court	Deputy Head of Art Heathfield Community College
Andy Pepperell	Head of Art Ringmer Community College

And last but not least our congratulations to all those students exhibiting, particularly the Award Winners and to all students whose work was considered in the earlier selection process in their schools.

Please note: Final decisions for all the Awards granted rest with the judges – Antony Penrose, Chairman of the Farleys Yard Trust and Ian Chance, the Director. The winners of the Surrealist Awards are at the discretion of the judges.

On behalf of the Trust, I should like to extend thanks to Dulcie Alexander and her team at the Gardner Centre for their cooperation; to the teachers who helped curate this exhibition and to all participating Schools across East Sussex without whose co-operation this exhibition could not have been held.

It is expected that this will become an annual event. For anyone who would like to know more about how to get involved in this or any other activity of the Trust please refer to our contact details at the back of this catalogue.

Noël Hardy

Project Co-ordinator
Farleys Yard Trust



Young people growing up in East Sussex have a unique opportunity to have a direct contact with the giants of twentieth century art that they study in the curriculum. Picasso stayed at Farley Farm House where his friend and biographer Roland Penrose lived and the spirit which led Roland Penrose to champion surrealist artists lives on today through the work of the Trust. By mounting this exhibition the Trust is encouraging and supporting the work of young artists and recognises their endeavour and achievement. Art at GCSE and A level is not an easy option as myth might have it but involves commitment, understanding and vision and very hard work.

The surrealist photographer Man Ray, the close friend and mentor of the other distinguished resident of Farley Farm House, Lee Miller, wrote: "It has never been my object to record my dreams, just the determination to realise them." In her own work Lee Miller stretched the definition of what a photograph could be and what it could record. Her career culminated in the work she did as a combat photographer in the Second World War. It is hard to think of an artist whose work could shed more light on the world of her own time in a way that resonates so closely with the passions and concerns of the generation whose work is shown here. There are references to fashion, movements in art, travel and conflict.

The East Sussex landscape has been the inspiration for artists for centuries too. We can see the downs, the sea and the sky through the eyes of Turner, William Nicholson and Eric Ravilious for example and the pebbles on the shore and their relationship to human forms through the photographs of Bill Brandt. Young people have the opportunity to see both the art of the past and contemporary exhibitions at The Towner Art Gallery in Eastbourne, Hastings Museum and Art Gallery, Ditchling Museum, the De La Warr Pavilion in Bexhill, at Charleston Farmhouse and here in the neighbouring Gardner Centre. But Farley Farm House is unique in what it represents as the home of surrealism in England and as a link to the most significant figures of the key art movements of the early twentieth century.

The arts and culture are both valued and enjoyed in East Sussex. Our schools are putting creativity to the fore, many achieving Arts Mark Gold awards, specialist status in performing and visual arts and media and by working with Creative Partnerships. This exhibition shows examples of the thought-provoking and thoughtful, interesting and powerful, poetic and descriptive dreams that have been realised by some of the County's young artists.

Hilary Lane

County Arts Officer

East Sussex County Council

2006

"If we are to move towards a wider consciousness we need constantly to experiment and to understand the experiments of others. That is why I am a surrealist. To experiment with reality."

Roland Penrose, 1938

Today much is heard and read about the importance of education with the complex and often-controversial subject of educational values, targets and priorities constantly in the news. Whatever direction or approach we choose it is vital that our priorities retain a desire to experiment guided by a spirit of enquiry.

Those who advocate the importance of visual literacy know it is impossible to realise the full potential of young people without engaging them with the values associated with the arts and creativity. Developing visual awareness with a perception of and appreciation for the world around us gives us the ability to express ourselves and helps us to make individual choices and responses to experiences in everyday life in terms of images and objects. This educational process also helps us understand who we are and strengthens our personal identity.

Education is at the heart of the Farleys Yard Trust, inspired by the artistic legacy of Roland Penrose and Lee Miller and their celebrated Surrealist and Modernist associates, drawn from the leading figures of 20th century art. This extraordinary cultural focus, unique in England, developed locally at Farley Farm House in East Sussex, and is the inspiration of the Farleys Yard Trust. The series of quotations throughout this catalogue are by artists associated with Farley Farm House.

This exhibition, which is the first of what we anticipate will become an annual event, shows a selection of the best work recently produced in East Sussex schools. Every school in the county undertaking art at GCSE and 'A' level was invited to participate. The exhibition is an opportunity for East Sussex schools to celebrate the excellent work undertaken by young people and their teachers in art departments across the county.

Six broad award categories were chosen as representative of the disciplines undertaken in most art departments

Painting

Sculpture

Textiles

Sketch Books

Photography/IT

Works on Paper

Two further awards will be made for works best demonstrating the values of Surrealism.

Schools made the initial selection based on these categories and were able to submit several works in a single category if this was felt to be the most appropriate. For most students this represents their first opportunity to show their work in a professional context in a public gallery. Each student selected to show work in the exhibition will receive a certificate while one student's work in each category which is judged to be outstanding will receive a Farleys Yard Arts Award and a material prize for their school. Winning works in the Surrealist Award category will be hung in Farley Farm House alongside works by Lee Miller, Roland Penrose, Pablo Picasso and many other leading artists of the 20th century.

Introduction cont.

In this first Farleys Yard Arts Awards exhibition the young people of East Sussex have demonstrated their ability to express themselves individually and in highly imaginative and original ways. At this critical time in their development they need our recognition and continuing support not only in the school and home but in the wider world. I hope this exhibition will be the first of many and by giving an overall picture of the quality of creative work in our schools across East Sussex, help bring about a wider appreciation of a talented younger generation and of the essential role of art in a balanced education.

We have every reason to celebrate these achievements and can take real pride in the quality and diversity of the works on display, each and every one of them an inspiration to us all.

Ian Chance

Director

Farleys Yard Trust 2006

BARCLAYS

Barclays is delighted to sponsor the first Farleys Yard Arts Awards.

The Awards allow us to celebrate the excellent art work undertaken by young people and their teachers across East Sussex.

We hope that these young people are truly inspired by the opportunity to exhibit their artwork in the professional gallery setting that the Gardner Arts Centre provides.

In 2005 Barclays global commitment to the community amounted to £39.1 million, which includes 1% of UK pre-tax profits. As one of the UK's largest corporate community contributors, the bank aims to achieve real and lasting benefit both for the community and Barclays.

Alan Hands

Community Relations Manager

Barclays

As Chairman of the Farleys Yard Trust it is a great pleasure to welcome this first Farleys Yard Arts Awards exhibition, at the Gardner Arts Centre, University of Sussex.

Reflecting on the artistic legacy of my parents and their many friends drawn from the leading artists of their time it is apparent that there is no more appropriate acknowledgment of their achievements than that they inspire younger generations of artists and designers.

Our Trust seeks to celebrate the creative achievement of young people in East Sussex by focusing on the quality of artwork being undertaken in our local schools and colleges.

We feel it is vital to promote a wider recognition of the importance of creative work in schools and in the communities in which the schools are located and join with parents and families to take pride in the creative achievements of their children.

It is particularly important to help the young generation at a critical transition in their educational development by providing an opportunity to exhibit their work outside the context of their examinations and into a wider and appreciative world.

East Sussex schools and colleges feature a wealth of talent and creativity which this exhibition seeks to celebrate. The students represented have developed their ability to respond to the visual world in personal and creative ways. This exhibition highlights how young people from across the County want to express themselves and their world. Opportunities have been taken to work experimentally and analytically while working hard to develop their skills to convey their ideas and feelings. These individual thoughts and feeling have been communicated through the use of an impressive range of media to present personal and unique visions of the world. I have found the artists statements particularly helpful in forming an appreciation of the works in the exhibition.

My sincere thanks are due to all involved. Farleys Yard Trust has been most encouraged by all the support and commitment from so many people and organisations. The experience of this marvellous exhibition demonstrates why this is so worthwhile.

Antony Penrose

Chairman

Farleys Yard Trust.

"Greetings to the solitary. Friends, fellow beings, you are not strangers to us. We are closer to one another than we realise. Let us remember one another in the night, even though we do not know each others names."

David Gascoyne

GCSE

Sarah Ammoun. PAMA

Acrylic. Bexhill High School.

"Late one afternoon I found my Grandfather sitting in the conservatory. He had been working at rug making and had paused for a rest. His face in repose was so full of character that I knew he had to be the subject of my painting. I rushed out of the room and got my camera and with one click had recorded the moment. This painting is the result."

Ella Catley. Overhead & Underneath –
Natural Sparkle Surrealist Entry

Acrylic. Chailey School.

"My idea evolved from combining beautiful flowers with bright lights, as this relates to my GCSE project 'Overhead and Underneath'. It inspired me to change the layout as a Surrealist painting. The use of colour makes my picture stand out. It shows my expressions of the overall image."



Ella Catley. Overhead & Underneath
– Natural Sparkle Surrealist Entry



Sarah Ammoun. PAMA



Poppy Crowley. Art & Conflict Mixed. Bexhill High School.

Editor's note: The power and emotional imperative of this piece is all the more remarkable when you learn how the artist's father was involved as a paramedic in the July 7th bombings in London and her art teacher's partner was also in the vicinity of the atrocities, illustrating how students can use art to mediate such potentially deeply disturbing experiences and come to terms with the times in which we live.

Chitney Diaz. Kurt Cobain

Pastel. Eastbourne Technology College.

This stunning piece is part of course work where students were invited to choose a celebrated character from contemporary society and portray them in chalk pastel. Advocates of the band Nirvana may recognize the face of a very young, angelic Kurt Cobain before his tragic end in 1994.

Paul Etherington. Self Portrait

Acrylic. Chailey School.

"My work is a self portrait. It has been developed from looking at the tradition of Chiroscuro."

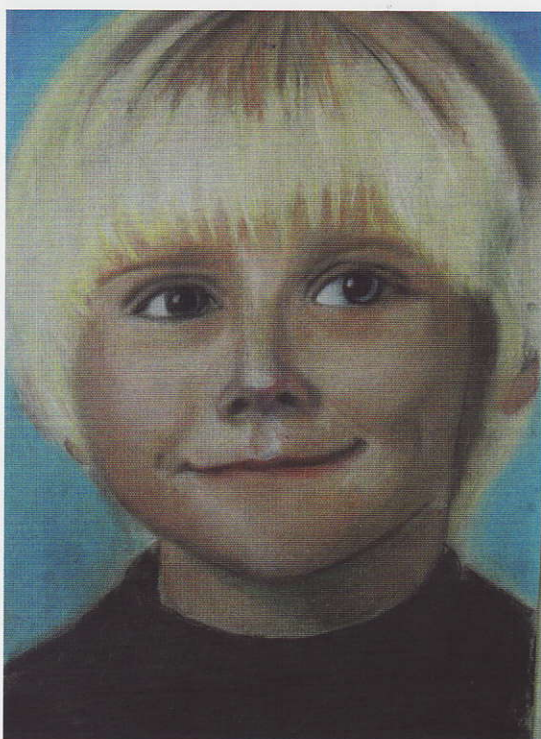
Kylie Horwil. Mirror

Mixed Media. Filsham Valley School.

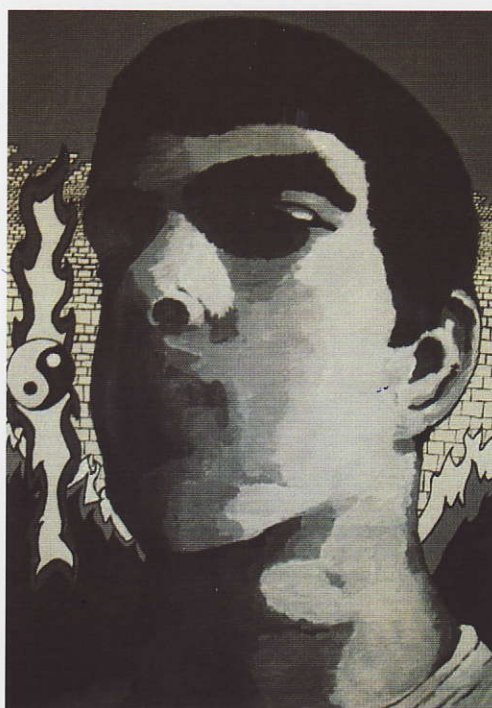
Work produced as part of the 'Architecture' unit. Exploring decorative and ornamental detail on buildings.



Kylie Horwil. Mirror



Chitney Diaz. Kurt Cobain



Paul Etherington. Self Portrait

Hannah Miller. Clock. Surrealist Entry

Mixed Media. Heathfield Community College.

"The painting explores my life, past, present and potential future, all shown on a Dali inspired clock."

'A' level

Daniel Barber. Yellow Cab

Sussex Downs College.

"I am very interested in 1960's culture especially the work of Klaus Voorman and have used a screenprinting technique to produce this detail."

Sol Bailey-Barker. Untitled

Sussex Downs College.

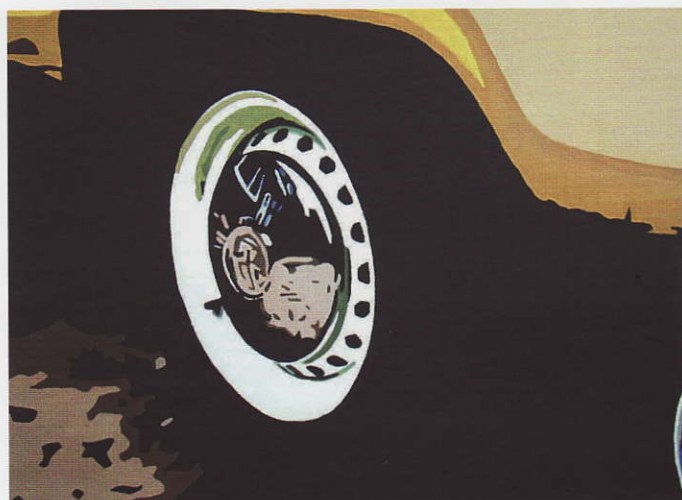
"I have taken influence from the work of Jean Michel-Basquiat and am interested in using painting to reflect modern cultural statement."



Sol Bailey-Barker. Untitled



Hannah Miller. Clock. Surrealist Entry



Daniel Barber. Yellow Cab

Alex Crowe-Evans. St Pauls

Mixed Media. Beacon Community College.

Kirsty Greig. Untitled

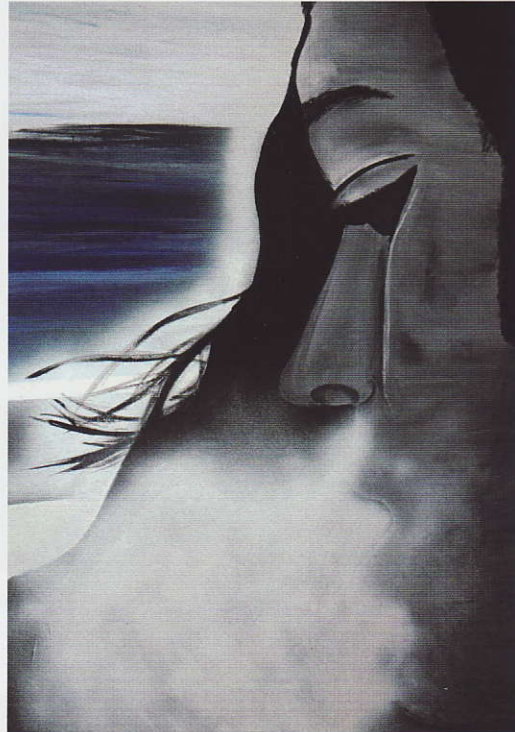
Heathfield Community College.

"My painting has explored the theme of creating movement within a static piece. I have combined the idea of illusions and colour placement in the background with a figure exhaling smoke. The whole piece has been designed to summarise a mood that is quite chilling. The scale of this piece also plays a huge part in conveying the message."

Miriam Hamblin. Landscape

Oil on Canvas. Bexhill College.

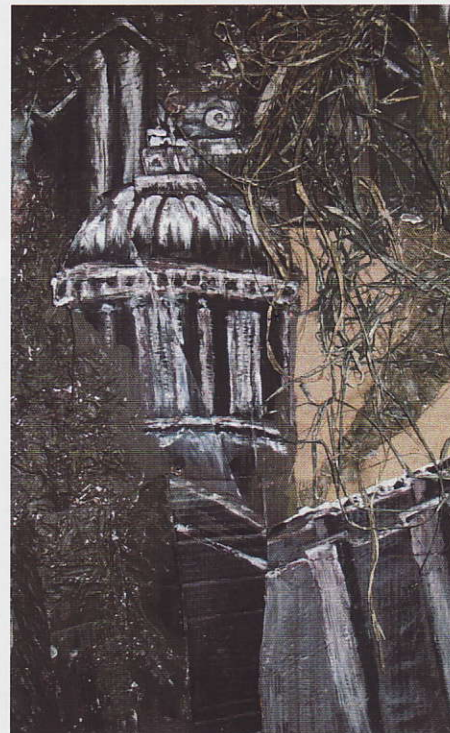
"This piece forms part of a project that originated with food and roots but which grew to incorporate elements of landscape. It was interesting to explore how the root itself can come to represent the land it grew in."



Kirsty Greig. Untitled



Miriam Hamblin. Landscape



Alex Crowe-Evans. St Pauls

Edward Patton. Untitled

Sussex Downs College.

An enthusiastic young artist who considers the essential meaning of work and means of expression. This piece was influenced by Marcel Duchamp and Chuck Close and involved 'Paddy' using his own shots of urinals as a means of responding to the famous 'Fountain'.

Emma Symons. Illusion & Reality.

Paint, Coloured Pencil & Oil Pastel. Uplands Technology Community College.

"This is the final piece from the project 'Illusion and Reality'. I looked at mixing different images to create a kind of abstract illusion. It is an enlargement of some of my smaller work. I decided to work on such a large scale because it is very striking and also best viewed from a distance."

Hatty Thorn. Nude

Sussex Downs College.

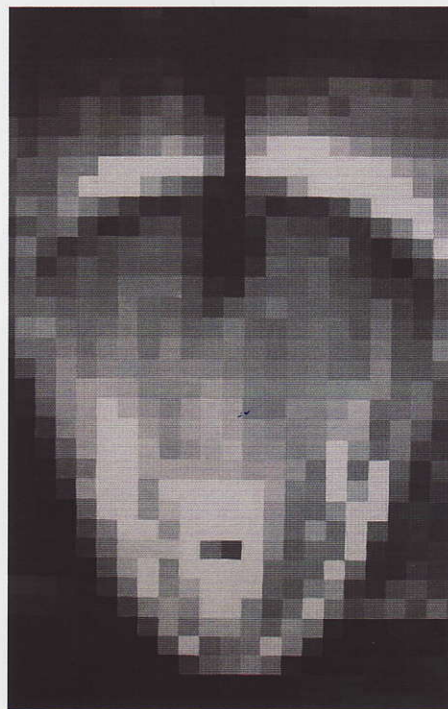
Hatty is a natural painter and this piece was taken from direct observation she is progressing to foundation at City College.



Emma Symons. Illusion & Reality.



Hatty Thorn. Nude



Edward Patton. Untitled

"Never permit a dichotomy in your life, a dichotomy in which you hate what you do so that you can have pleasure in your spare time. Look for a solution in which your work will give you as much happiness as your spare time."

Pablo Picasso.

GCSE

Emily Fletcher. Self Portrait

Mixed Media. Uckfield Community College.

"My self portrait is a mixed media piece made using tonal acrylic paint and newspaper. I studied the photorealist work of Chuck Close and used his techniques to enlarge my own head. I am really pleased with the outcome because there is a good likeness with a strong composition."

Kerry Iles. Above and Below

Newspaper Collage. Eastbourne Technology College.

Kerry took the theme of 'Above and Below' by interpreting the injustices of modern life between the rich and the poor, the degradation of woman and plight of the homeless. She deliberately portrays a homeless youth made with newspapers as these unfortunate people often use it to keep warm. The sentiment is complete.

Toby Knight. Environment.

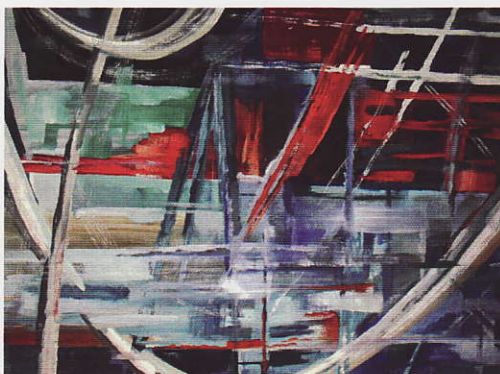
Mixed Media. Beacon Community College.

'A' level

Henry Cloke. In Spirit.

Oil Paints. Uplands Technology Community College.

"Inspired by a fusion of images of the De La Warr Pavilion, this work uses free brush strokes to depict the building's stark linear lines and contrasting, sweeping staircase."



Henry Cloke. In Spirit



Toby Knight. Environment



Kerry Iles. Above and Below



Emily Fletcher. Self Portrait

Eleanor Gibson. Seeds of Pomegranate.

Mixed Media. Uplands Technology Community College.

"Seeds of Pomegranate is a piece inspired by M.C. Escher's watercolour 'Symmetry Drawing'. I used Escher's fish to represent the seeds inside a pomegranite, as their form is a repetition of the seeds. To add texture and tone, my piece includes different media of pastels, acrylic and collage."

Lauren Keen. Seated at Rest.

Graphite, Oil Paint on Tracing Paper. Bexhill College.

"The drawing forms part of a project where I set out to explore the fluidity of line and how both drawn and painted linear marks can record and capture energy even if the subject is fairly static. I was also interested in the qualities of the materials."

Nyasha Madzimbamuto-Ray.

Untitled

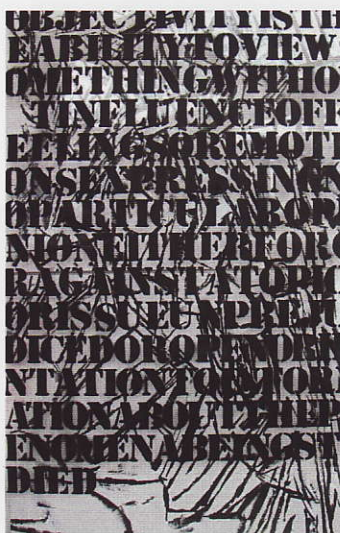
Mixed Media. Sussex Downs College.

"I am very interested in strong statements and high contrast. I used influences from Marcel Duchamp and Christopher Wool to produce this piece. I am considering a career in visual art."

Rachel West. Skeletons and Crustaceans.

Uckfield Community College.

"My exploration of texture and materials is in response to the theme 'Skeletons and Crustaceans'. The shells that I found and collected inspired me to explore their surface texture and pattern qualities in an imaginative and creative way. I chose a close up of my collection in order to create a strong composition."



Nyasha Madzimbamuto-Ray.

Untitled



Lauren Keen.

Seated at Rest



Rachel West. Skeletons and Crustaceans



Eleanor Gibson. Seeds of Pomegranate

"All art should have a certain mystery and should make demands on the spectator. Giving a sculpture or a drawing too explicit a title takes away part of that mystery so that the spectator moves on to the next object, making no effort to ponder the meaning of what he has just seen. Everyone thinks that he or she looks but they don't really, you know."

Henry Moore

GCSE

Natalie Farmer. Untitled
Surrealist Entry.

Mixed Media. Heathfield Community College.

The piece is a globe that explores cultural patterns from around the world.

Hannah Gage. Floral Vortex.

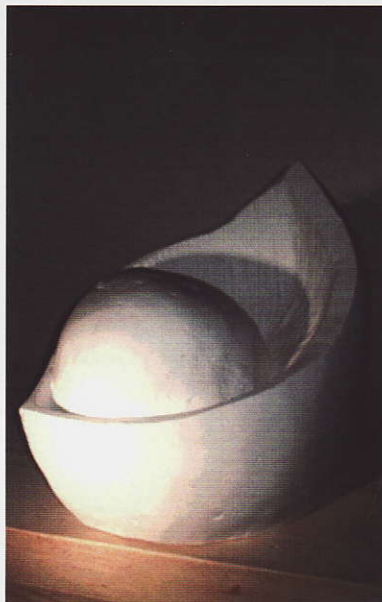
Mixed Media. Ringmer Community College.

"Initially inspired by static natural forms, 'Floral Vortex' is symbolic of nature in flux. Tidal tones and urchin-like forms snake around the central, spiral, spinal vortex, drawing us in, onwards and downward, enveloped and lost to nature – mother and destroyer, echo of flower, whirlpool, hurricane and black hole."

George Palmer. Pod.

Wood and Plaster. Ringmer Community College.

"Based on the dual themes of protection and vulnerability, my sculpture represents the nurtured, embryonic, hermetically sealed, sterile environment of the precious. Usually unseen, this state of encapsulated perfection has been torn open to reveal its inner charge. At once the pod is demystified, its kernel exposed and so, corrupted."



George Palmer. Pod.



Hannah Gage. Floral Vortex.



Natalie Farmer. Untitled Surrealist Entry.



Genna Whitehead. Bodice

Mixed Media. Filsham Valley School.

Work produced in response to GCSE exam title 'Underneath and Overhead'. Workbook documents the development of ideas from literal images of overhead cables and structures to more informed and complex solutions.

'A' level

Jamie Barnard. Self Portrait.

Uckfield community College.

"My sculpture is a self-portrait. I was inspired by a visit to Farley Farm House where I encountered work by the Surrealists in particular Roland Penrose. The Clock represents the passage of time in my life and the buildings are personal memories of my time in London and New York."

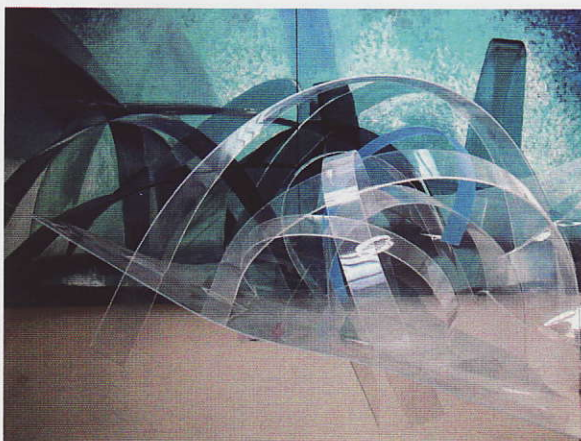
Cassie Burgess-Rose. Untitled

Mixed Media. Sussex Downs College.

Cassie was this years winner of the NADFAS young artists award at the Thebes Gallery. She is very interested in Gehry and Le Corbusier and the synthesis of the environment and its structures with personal and emotional issues.



Genna Whitehead. Bodice



Cassie Burgess-Rose. Untitled



Jamie Barnard. Self Portrait

Henry Cloke. Organica

Metal, Wood, Mod Rock, Paint, Latex.
Uplands Technology Community College

"This sculptural expression of natural form brings together the precision of minimalism and the freedom of the organic. By using metal, fabric and mod-rock I managed to fuse these distinct opposites in style."

Kelly Gildersleeve. Heads

Plywood. Bexhill College

"The sculpture explores the interaction of positive and negative space and was developed from portraits of family and friends. The views through the piece change from each point creating new combinations of line and space."

Laura Gillham. Concealed and Revealed

Mixed. Uckfield Community College.

"I was deeply affected by a visit to a war bunker in Normandy. I decided to base my piece on the life of Lee Miller. I was particularly interested in the way her life changed from model to respected artist and war photographer. I felt this change allowed her creative and expressive freedom. I regard fashion as restrictive and negative in the way it forces women to conform and promotes dissatisfaction with our own bodies."



Henry Cloke. Organica



Kelly Gildersleeve. Heads



Laura Gillham. Concealed and Revealed

Erin Lewis. Stealth Bomber Dress

Sheet Steel. Bexhill College

"The piece grew from an interest in corsets and fashion combined with the crisp linear elements of a stealth bomber which inspired some elements of folding and scoring in the metal."

Christian Martin. Torso

Wood and Metal. Heathfield Community College

Sarah Mills. Time and Space

Uckfield Community College.

"In my piece entitled 'Time and Space' I was exploring negative space in a 3D form. I visited the Greenwich Observatory and this inspired me to explore the notion of the antiquity of time, at the same time linking man made and organic form."



Sarah Mills. Time and Space



Erin Lewis Stealth Bomber Dress



Christian Martin. Torso

Rowena Morris. Door Frame.

Mixed. Heathfield Community College.

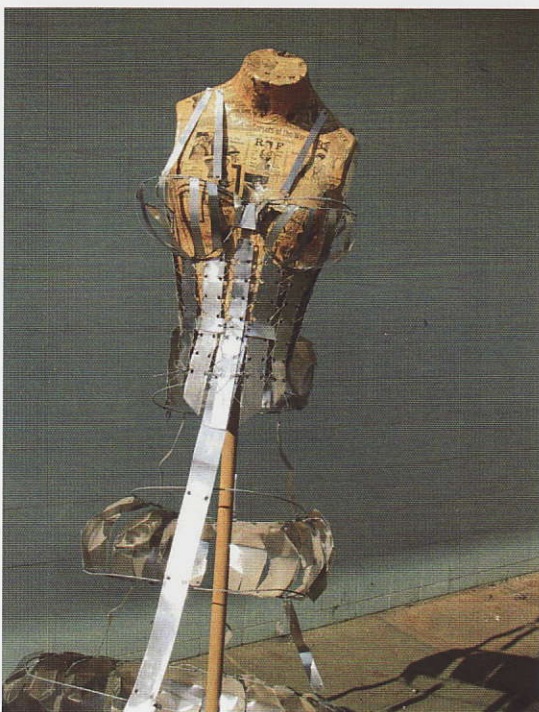
"Looking at people's viewpoints and how these are developed and altered over time, I examined objects over time and those of special historical significance. It is not only age that plays a part, but it combines with the context that the object was in at different points in time."

Zoe Weston. Metal Dress

Metals. Beacon Community College



Rowena Morris. Door Frame.



Zoe Weston. Metal Dress



Allphotos Ltd

"The thing that makes one man's work finer than others is his honesty."

Lee Miller

'A' level

Alex Bailey. Untitled

Digital and Photographic. Uckfield Community College.

"These digital images are the final outcome of my video exploring my response to meaning in modern art. In my video I enter a surreal world. The video expresses my confusion about the world of Art. I wanted to explore my feelings of belonging but not understanding."

Dominic Cross. Untitled

Heathfield Community College.

"I have looked at the broad theme of objects and objectivity from the seemingly simple angle of everyday objects. I focused on everyday objects because they are visually taken for granted and then I altered the placement of it, making the viewer study it further and question its true function."

Lily Evans. Montaged Portrait

Black & White Photography. Bexhill College

"The idea behind the work was based upon exploring fractured imagery and how viewpoints and feelings about an image can change. The woven layering of images is used to bind the parts."

Emma Symons. Untitled

Photography, SLR & Digital. Uplands Technology Community College.

"These photographs were the final piece for a project on viewpoints. I looked at reflections in shop windows and the abstraction caused by a mixture of vertical and horizontal lines. I like the way the reflections of passers by are also captured by altering the contrast digitally. I enhanced the abstract frameworks."



Lily Evans. Montaged Portrait



Dominic Cross. Untitled



Emma Symons. Untitled



Alex Bailey. Untitled

The Fabric Shop

"For me an object is something living. This box of matches contains a secret life much more intense than that of certain human beings."

Joan Miro

GCSE

Kerry Morgan. Kimono

Mixed Textiles. Filsham Valley School.

GCSE course work produced as a final piece in response to a visit to the Victoria and Albert Museum, London and its multi cultural galleries.

'A' level

Sarah Dodd. Wall Piece

Mixed Media. Beacon Community College

Kate Reece. Rituals

Mixed Media. Beacon Community College



Kerry Morgan. Kimono



Kate Reece. Rituals



Sarah Dodd. Wall Piece

Textiles

The Fabric Shop

Katie Robinson Eastern Tutu

Fabrics & Embroidery. Bexhill College

"The tutu formed part of a project that used the rich decorative elements of built structures to inspire garments. The colours, shapes and patterns found in Islamic architecture were manipulated to create this piece."

Amy Vince Untitled

Soft Sculpture and Textiles.

Heathfield Community College

"Soft sculpture, combining textile techniques. It has been designed with a window display theme in mind, where colour explores mood. Inspiration has come from a combination of high street fashion and insects."



Katie Robinson Eastern Tutu

Penny Wheatley.

'Animal Rights' Jacket

Mixed Media. Beacon Community College



Penny Wheatley. 'Animal Rights' Jacket



Amy Vince Untitled

"Creativity is that marvellous capacity to grasp mutually distinct realities and draw a spark from their juxtaposition."

Max Ernst

GCSE

Poppy Crowley. Art & Conflict

Mixed Media. Bexhill High School

"The work being presented is based on a personal response to Roy Lichtenstein's comic strip canvases. To link with the artist I have used flat colour, black lines and precise representation of coloured dots. I have used the theme of war but only supplied a few frames of the story."



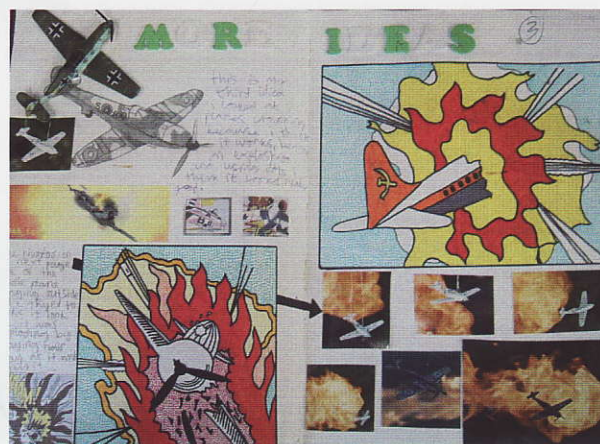
Henry Cloke. An Exploration of the Organic

'A' level

Henry Cloke. An Exploration of the Organic

Pencil, Paper, Pen. Uplands Technology Community College

"This study of organic form was initially inspired by American Artist Georgia O'Keeffe. I explored her methods of magnifying and simplifying the subject, using a variety of media and texture to create this collection of work."



Poppy Crowley. Art & Conflict

Lucy Gentry. Exploration of Hidden Forms

Collage, Paint, Coloured Pencil. Uplands Technology Community College.

"With research from four chosen artists, I took a personal direction into exploring how to portray/ conceal certain forms, experimenting with a variety of media. The final outcome takes on a greater illusion than some of the previous pieces and was inspired mostly by Raymond L Haywood."



Lucy Gentry. Exploration of Hidden Forms

Sketchbooks



FRANCES LINCOLN

Emma Symons Personal Study

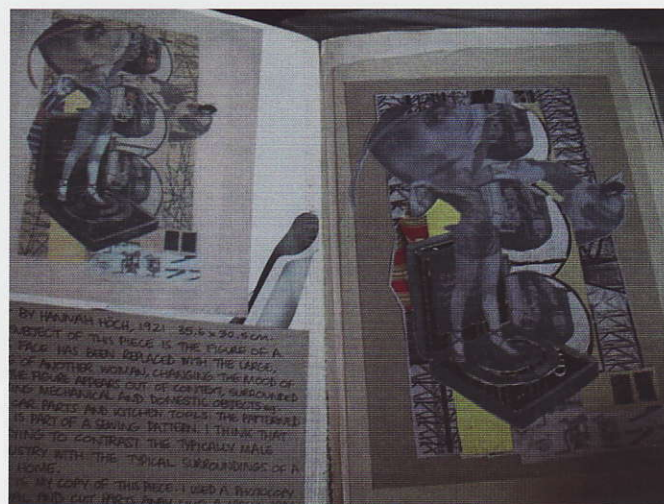
Mixed media. Uplands Technology Community College.

"This is a research project, where I took an in depth look at the technique of Photo montage. I have looked at 'Anti-Art' and how random objects can become art. This is why I have chosen to work into a magazine rather than a sketchbook. Also magazines and newspapers seem to play a key part in my own work."

Clara Tsang Sketchbook

Mixed Media. Heathfield Community College

"The whole sketchbook explores the theme of the environment; this later specializes in following the theme of seasons and the figure."



Emma Symons Personal Study



Clara Tsang Sketchbook

WHAT WE DO:

Farleys Yard Trust is an imaginative Arts and Educational centre being created at the home of Surrealism in England. Education is at the heart of all we do. The Farleys Yard Trust's year-round educational programme provides opportunities for workshops, talks, screenings and drama presentations throughout East Sussex and wider afield, for both Adults and children. Farleys Yard Trust also develops partnerships in response to educational, corporate and community needs and requests.

WHO WE ARE:



Ian Chance. *Director*

Ian is leader of the Farleys Yard Team and is responsible for initiating the Trust's Arts and Education Programmes with associated resourcing of Projects and activities



Tony Penrose. *Chairman*

Son of Roland Penrose and Lee Miller. Tony is our principal advocate, guardian of the artistic legacy at Farleys and inspirational pioneer.



Brenda Longley. *Honorary Company Secretary*

Brenda keeps the Farleys Yard Trust financial and business affairs in good order.



Noël Hardy. *Project Co-ordinator*

Noël co-ordinates the arts and education programme activities, including projects plus liaisons with schools and colleges in support of our educational partnerships.



Kerry Negahban. *Administrator*

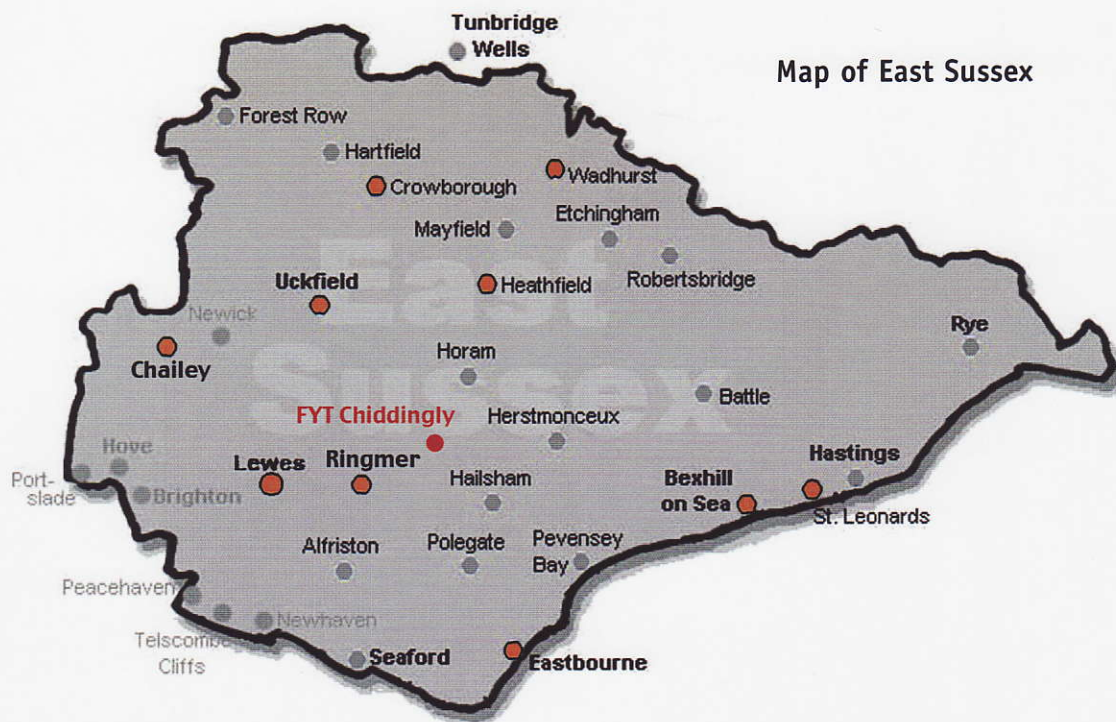
First point of contact and responsible for information flow in and out of the office.

Where you find us:

If you are interested in finding out more or wish to support the work of the trust please contact us at:

Farleys Yard Trust Ltd
Farley Farm House
Chiddingly
East Sussex BN8 6HW

Telephone: 01825 872230
Fax: 01825 872733
Email: farleysyardtrust@btinternet.co.uk
Website: www.farleysyard.co.uk
www.leemiller.co.uk
www.rolandpenrose.co.uk



Participating Schools and Colleges.

- Beacon Community College** ~ East Beeches Road, Crowborough, TN6 2AS
- Bexhill College** ~ Penland Road, Bexhill-on-Sea, E.Sussex, TN40 2JG
- Bexhill High School** ~ Down Road, Bexhill-on-Sea, TN39 4HT
- Chailey School** ~ Mill Lane, South Chailey, Lewes, BN8 4PU
- Eastbourne Technology College** ~ Brodrick Road, Eastbourne, BN22 9RQ
- Filsham Valley School** ~ Edinburgh Road, St Leonards-on-Sea, TN38 8DA
- Heathfield Community College** ~ Cade Street, Heathfield, TN21 8RJ
- Ringmer Community College** ~ Lewes Road, Ringmer, Lewes, BN8 5NE
- Sussex Downs College** ~ Mountfield Road, Lewes, E. Sussex, BN7 2XH
- Uckfield Community College** ~ Downsview Crescent, Uckfield, TN22 3DJ
- Uplands Community Technology College** ~ Uplands, Wadhurst, TN5 6BA

Coming Shortly.....

The Mini Print International

Exhibition 23 September to 18 October 2006

Farleys Yard, Chiddingly, East Sussex, BN8 6HW

Over 600 artists from over 60 countries throughout the world make this exhibition a truly global experience, combining richness and diversity of subject matter with every known technique, with associated printmaking workshops.

The Lee Miller Centenary 2007

A series of workshops for schools, education projects and exhibitions are planned to celebrate the centenary of Lee Miller in 2007.

This Catalogue is published by Farleys Yard Trust on the occasion of the First Farleys Yard Arts Awards and printed by Sumfield and Day. Our thanks go to Nigel Allchorn and his team for their support.

Catalogue compiled and edited by Noël Hardy.