



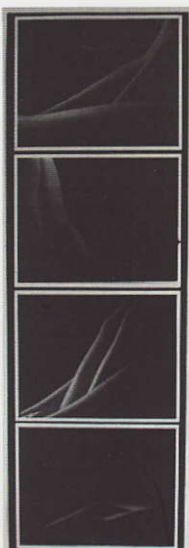
Farleys Yard Arts Awards

A Celebration of East Sussex Schools Visual Arts

Farleys Yard Barn Gallery

Farleys Yard Barn, Farleys Yard, Chiddingfold, East Sussex BN8 6HW

October 2007



website: www.farleysyard.co.uk

Acknowledgments

Farleys Yard Trust gratefully acknowledges the support of:



SOUTH SQUARE TRUST



The
co-operative
membership



A&B
Arts & Business

Farleys Yard Trust wishes to thank Mark-it Printers, Bexhill Tel: 01424 731249 for the sponsorship of Printing the Invitations and Le Bureau Tel: 01273 480950 for printing the Award Certificates.

Farleys Yard Trust is indebted to the continuing support of the following companies who have generously provided prizes for the exhibition awards:

Allphotos Ltd

TEL : 01903 206893

Email sales@allphotos.net

Suppliers of quality materials and equipment from traditional to digital photography. Free delivery to educational establishments in the South East.



Recommended by teachers
Trusted by parents, loved by kids



Inwood Developments Ltd
The Woodland Centre
Whitesmith, Lewes
East Sussex BN8 6JB
T: 01825 872 150
E: info@in-wood.co.uk



The Parker Partnership
Cornelius House
178 - 180 Church Road
Brighton BN3 2DJ
Tel: +44 (0) 1273 722505
E-mail: info@parkerpartnership.co.uk



Suppliers of quality art and design materials, backed by a friendly personal service.

The Fabric Shop

High Street, Hove
TEL : 01435 813306

Designer Curtain and Upholstery fabric

FRANCES LINCOLN



Thames & Hudson

Welcome to the Farleys Yard Arts Awards 2007

As the new Chairman of Farleys Yard Trust may I first say what a privilege and honour it is to have been elected by the Board of Trustees to this position. The thanks of the Board must go to Tony Penrose for his determination and diligence in founding the Trust and for being its Chairman over the last three years.

This is the second Farleys Yard Arts Awards exhibition and it is a great delight to be holding it in the Farley Yard Barn. The connection with Farleys Barn to such famous names as Roland Penrose, Lee Miller, Picasso and many others gives the young students a real sense of contributing to and becoming part of a very exciting art world.

The Farleys Yard Trust is an Art and Educational Trust set up as a charity and we are encouraged by the support and commitment from so many organisations and people.

Support and funding are essential for us to continue our educational programme.

The Exhibition celebrates the wealth of talent and creativity that is harboured within the schools and colleges of East Sussex.

My sincere thanks to all involved in arranging this exhibition particularly to all the Art Departments in the schools who share their vision and enthusiasm with the students.

Cllr Sylvia Tidy.

Chairman Farleys Yard Trust



"The mind which plunges into Surrealism, relives with burning excitement the best of childhood"

Andre Breton

The moment I first stepped into the Farley Farmhouse dining room in the summer of 2001, I realised I had seen it before. Several years earlier a student at the local comprehensive school in Ringmer, had shown me a brilliant sketchbook of a GCSE project on Surrealism, full of images by Picasso, Miro, Ernst, Roland Penrose and many others. They appeared to be in the setting of a huge fireplace, or in a kitchen or on domestic walls and corridors. I couldn't quite grasp what I was being told: these priceless works of art were in a local farmhouse.

I defy anyone who goes around the farmhouse here not only to be affected by the artwork visible, but also to be deeply inspired by the knowledge that such giants of European twentieth century art met together in this attractive East Sussex village at the home of Sir Roland Penrose and his wife, American photographer Lee Miller. As an educationalist any opportunity to set up any experience which leads students of all ages to marvel at such a unique combination of circumstances is really exciting. Just by making a personal connection with the place energises and motivates students to listen, look and find out more about the artistic movements these artists were part of. Such special relationships with quite 'normal' places has inspired great works of art from Cezanne's fascination with Mont St-Victoire to the interiors of Vermeer's Dutch homes.

Education is about unlocking potential, developing talents and creating opportunities that will often surprise students themselves by what they can achieve. It is also hugely about enjoyment. The Farleys Yard Trust is all about finding ways to develop talent, inform, inspire and set challenges. The Farleys Yard Arts Awards are one very successful way of both developing the wide ranging talents, imagination and commitment of our local young people and also providing great enjoyment and inspiration for all those visitors who view their exhibition. The education programme of the Trust is expanding within the community over the coming months to include illustrated lectures in Lewes and Brighton linked to the Retrospective Exhibition of Lee Miller's work and to develop further the outreach work into local schools, colleges and communities. The support of the local and regional community is absolutely crucial in order that the development of resources and events can be sustained. I look forward to contact from individuals, schools, colleges, community groups and regional organisations. Please discuss how you can support the Trust develop the educational possibilities linked to Farley Farm.

Rosemary Colebourn

Education Adviser

Farleys Yard Trust

An introduction to the Farleys Yard Arts Awards 2007

"A poem or a picture have the quality of being like a window which opens out on a horizon and lets light into our consciousness." Roland Penrose

The Farleys Yard Arts Awards, now in its second year, comprises artwork from 10 Schools and Community Colleges in East Sussex undertaking art at GCSE and A level. These Awards are offered at both levels in six categories, representing the broad range of media undertaken in art departments today – Painting, 3D /Sculpture, Textiles, Sketch books, Photography/IT and Mixed media/work on paper. There are two further Awards for the most imaginative Surrealist works.

The initial selection is made in the Schools by the Heads of Art who chose artwork in the category or categories that best represent the achievements of their students. For most students this is the first opportunity to exhibit their work publicly outside the examination framework thereby experiencing a response to their work from their peers and the wider public which is after all one of the most important reasons for making the work in the first place.

Each selected student receives a Farleys Certificate and one student in each category, judged to have made the most outstanding work, receives a Farleys Arts Award and a prize of materials for their school which have been generously donated by several national and regional businesses. Two further works winning the Surrealist Awards category will be hung for a year in Farley Farm House 'Home of the Surrealists' and seen by the visiting public alongside work by Lee Miller, who is currently being celebrated in her centenary year, Roland Penrose and other leading artists of the 20th century including Pablo Picasso, Man Ray and Max Ernst. All the students' selected work is illustrated in this exhibition catalogue and posted on our website.

Farleys Yard Trust believes young people deserve our support and encouragement to fulfil their creative potential and hope they find true inspiration in the setting at Farleys along with the quotations by artists associated with Farley Farm House that are included in this catalogue. This exhibition reveals just a part of the huge fund of talent and ability possessed by young people in our local schools. The quality of work on show is the product of much hard work and inspired teaching and it challenges us to rise to greater efforts in support of such achievements. This is an occasion to celebrate the exceptional creativity of this imaginative and thoughtful new generation of young people in East Sussex.

Ian Chance.

Director Farleys Yard Trust 2007

Acknowledgements

"God is really only another artist, he made the elephant, giraffe and cat. He has no real style but keeps trying new ideas." Pablo Picasso

It is with the greatest of pleasure and a deal of pride that, on behalf of the Trust I pay tribute to all those who have ensured that the Farleys Yard Arts Awards have become an annual fixture.

This year the work of all participants and the entire contents of this catalogue are also on display in our virtual gallery on the internet - please visit our website - www.farleysyard.co.uk. We are also most grateful to Parkers who will publish the winners in their annual calendar.

We are particularly indebted to our new supporters and to the loyalty and generosity of our benefactors - companies both local and national most of whom supported us last year - who have so magnificently provided prizes in the award categories.

None of this could have taken place without the dedication, enthusiasm, commitment and effort of all those teachers and support staff in schools. Members of the working party together with participating schools become members of the Farleys Associate Schools Group.

I can find no better way of thanking everyone involved, teachers, schools, companies and benefactors, than by quoting from a letter received last year from the father of one of the prize winners.

"I would like to take this opportunity to say thank you for showing my daughter's work at the schools exhibition...Firstly I found the exhibition to be a totally professional affair, beautifully set out, fabulous content and enjoyed by everyone I spoke to.

More importantly I would say that my daughter was on the point of giving up on her talent and looking for any job on leaving education. All your kind words and positive feedback have brought about a complete u-turn.

She now plans to go to college and study Art - for the difference you have made I am truly grateful, thank you."

If ever proof were needed of the power of art to change lives this is it!

The above heartfelt thanks belongs to all who are involved in, and support this project.

For anyone who would like to get involved in this or support any other activity of the Trust please refer to our contact details at the back of this catalogue.

Noël Hardy

Project Co-ordinator

Farleys Yard Trust

"There are painters who transform the sun into a yellow spot, but there are others who, thanks to their art and intelligence, form a yellow spot into the sun."

Pablo Picasso

GCSE

Grace Meheux. Self-portrait

Ink, wash and chalk. Chailey School

A self-portrait developing from research into Renaissance drawing and chiaroscuro.

Eleanor Gibson. Untitled

Acrylic. Uplands Community College

"The painting was produced in response to the exam theme of wraps. I was inspired by the artworks of Art Deco."

Georgia Waters. In the Environment

Paint, plaster and denim. Beacon Community College

Working to the theme of 'Wraps' and inspired initially by an installation which had projected images on to a figure, the idea of wrapping one's self in the environment was explored and developed. An exploration of surface through photography and experiments with various mixed media processes including encasing garments in plaster led to this piece.



Grace Meheux. Self-portrait



Georgia Waters. In the Environment



Eleanor Gibson. Untitled

'A' level

Leigh Parks. Shoreline

Mixed media. Beacon Community College

Based on the theme of 'Boundaries' and inspired by Christo and Chris Drury, this piece was developed as a result of scavenging raids on Hastings beach and numerous drawings, photographs, collage and in an attempt to explore the qualities of light and surfaces found along the shoreline.



Leigh Parks. Shoreline

Tom White. Self-portrait

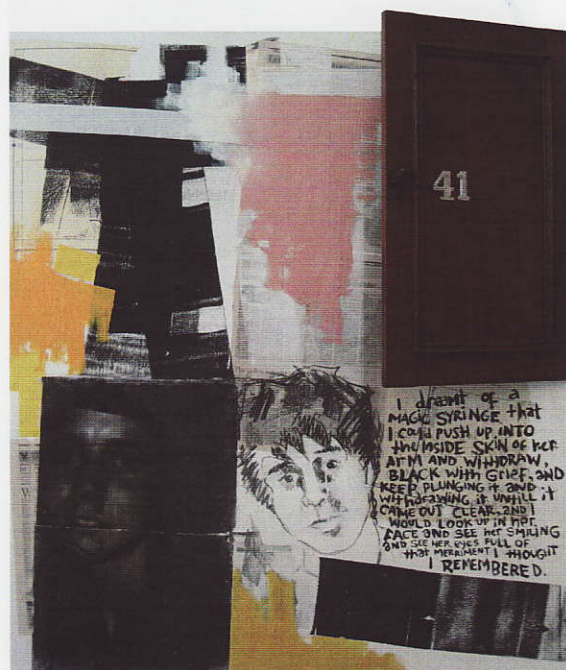
Various. Sussex Downs College

'This reflective piece echoes work of Robert Rauschenberg in its juxtaposition of abstract painting techniques and the employment of self-referential elements and 'objets trouve's'. The outcome is a meaningful reflection, and a serious expression of personal relationships.'

Natasha Knight. Time

Acrylic. Uckfield Technology College

"The photography of Lee Miller was a starting influence and her photos of her life influenced me to do the same. The painting is a reflection of this and portrays a celebration of 'my time'.



Tom White. Self-portrait



Natasha Knight. Time

Saskia Minns. Freedom

Oil. Uplands Community College

"This painting represents the concept of movement of animals in the wild for survival driven by natural instinct; linked in with endangered species and how animals are being exploited especially in Africa, and how they are facing more threats so their survival in the wild is tested more than ever, limiting freedom."



Saskia Minns. Freedom

Hazel Dowling. The Old Town

Various. Bexhill College

"Enigmatic unknown figures and forgotten lives encapsulated in old photographs have inspired my work. In the modern world of clones and capitalist plastic mass production the junk shops of Hastings Old Town provide an Aladdin's cave of individualism and is a parallel microcosm of history."

Various. Bexhill College

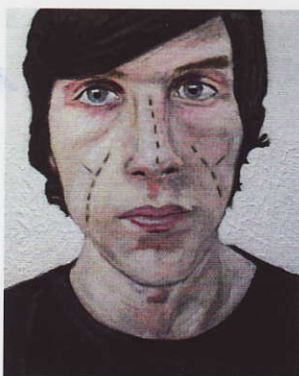


Hazel Dowling. The Old Town

Chloe Chandler. The Butcher

Oil on canvas. Bexhill College

"Through my chosen subject of meat, I strove to re-configure the psychological barriers we as humans place between ourselves and other animals that we see as commodities, I attempted to expose people as the mortal, carnal, fleshy creatures that we convince ourselves we are not. The butcher is now the commodity, the meat around him his equal."



Sally Frelander. Portrait

Sally Frelander. Portrait

Acrylic on Plywood. Bexhill College

"My Project primarily stemmed from my interest in psychology and what we as humans perceive to be 'body beautiful'. I became continually frustrated by the media, as they portray unrealistic images of women and men alike. I wanted simply to tackle the taboo, portraying and exploring the body as it happens to be, warts and all. In this portrait I simulated a cut, as an illustration of imperfect skin."



Chloe Chandler. The Butcher

Try to apply colours like words that shape poems, like notes that shape music.

~ Joan Miro

GCSE

Dan Kempson. Untitled

Bexhill High School

Naomi Walker. Entrapment

Wire, wool and ink. Beacon Community College

The theme of 'Wraps' lead to an exploration of animal rights issues. This piece was developed from a number of first hand studies and was inspired by Elizabeth Berrien's wire 'drawings'.

Claire Burns. War and Conflict

Pastel, pencil, charcoal. Ringmer Community College

"My piece was inspired by war and conflict. The two roman soldiers portray the contrast in the feelings and emotions felt in war, on the one hand and desperation and weakness against power and strength."



Dan Kempson. Untitled



Naomi Walker. Entrapment



Claire Burns. War and Conflict

'A' LEVEL

Laura Winchester. Bib

Collaged paper. Heathfield Community College

"Part of my subject matter board based on facial expressions and body structures. It is a collage study of my friend which is made up of tiny pieces of magazines and newspapers, carefully selected to find the right colours, tonal qualities and textures to create her facial expression."



Laura Winchester. Bib

Charlie Abbott. Cubist Still Life

Charcoal, paint, pencil. Uckfield Technology College

"Exploring the notion of Boundaries in a traditional format, using distorted, Cubist perspectives and mixed media to push and instill a sense of movement in the piece."

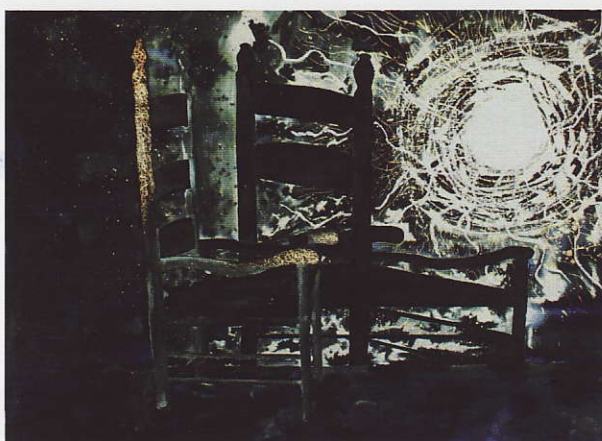


Charlie Abbott. Cubist Still Life

Guy Copland. Chair Energy

Ink, bleach, wax. Bexhill College

The drawing explores light and the shadows from simple everyday objects. I became more interested in the intensity of the light and the marks that could be used to create a sense of the electric light. The wax, ink and bleach allowed me to capture this energy.



Guy Copland. Chair Energy

Andrew Goodenough. Movement, Freedom, Separation

Various. Filsham Valley

"My main inspiration for my final piece came from the works by Dominic Harris and Graham Brant. I was immediately inspired by the irregularity and the movement. This piece originates from a combination of the two artists' work and is meant to represent movement, freedom, and separation."



Andrew Goodenough. Movement, Freedom, Separation

One never knows what each day is going to bring. The important thing is to be open and ready for it.
Henry Moore

GCSE

Emily Adams. Untitled

Board, Hessian, brick, leaves, paint and cord.
Bexhill High School

Editor's note: The significance of this piece is the more remarkable when you learn it was created shortly after artist lost her father. Written onto the painted leaves is a poem dedicated to him, expressing the artist's feelings at the time of this event. The materials are representative of the artist's father's profession as a builder. The work is testimony to the way in which the creative act of making art helps heal dealing with deeply emotional events in a positive fashion.



Emily Adams. Untitled

Annabelle Lancaster.

Coral Shell Sculptures

Chicken wire, modroc acrylic. Heathfield Community College

"William Morris wallpapers inspired me as well as Egon Schiele's moving images of unwell beings. William Morris uses delicate natural forms in his work and uses great detail to reflect how beautiful nature is. Egon Schiele's strong sketches provide movement and depth in human form. I have tried to show in my three shells how delicate Nature is – by the timid coral creeping up a thin stem holding up the natural wonders that are the shells... beads are placed where the contours of the shell move so it looks like they fall around the shell wrapping the beauty around the strong outer covering.."



Annabelle Lancaster.
Coral Shell Sculptures

Hanna Brown. In the Face of Pain

Various. Ringmer Community College

"This piece is based on the themes of the novel Nineteen Eighty Four by George Orwell. I decided to use Joseph Cornell's inspired assemblage technique because I was fascinated by the way objects, when grouped together in a certain way, can tell a story like words; within the confines of the box and a set space, like a novel."



Hanna Brown. In the Face of Pain

Jafer Yusef. Guitar

Various. Filsham Valley School

Inspired by a visit to the Victoria and Albert Museum in London – after visiting the Music rooms and the multi-cultural galleries Jafer combined his experiences in this final piece.

Alie Greig-Mackintosh.

Urban Camouflage

Modroc, acrylic. Chailey School

Based on surreal concepts of displacement and costumes from the film True Stories, the idea of urban camouflage developed.

'A' LEVEL

Natalie Denyer. Wicker and Wire

Wire, withy and fabric. Beacon Community College

Based on the theme of 'Fragments' an investigation of various structures including segments of pinecones and the articulations of prawn shells led to this textile piece in wire, withy and fabric.

Tim Brown. Conceptual Self Portrait

Various. Sussex Downs College

"A referential self-portrait which employs specifically selected artefacts in the production of a 3D piece.

Interesting objects and surfaces arranged in a contained space. The piece has an aged and discarded quality reminiscent of Joseph Cornell."

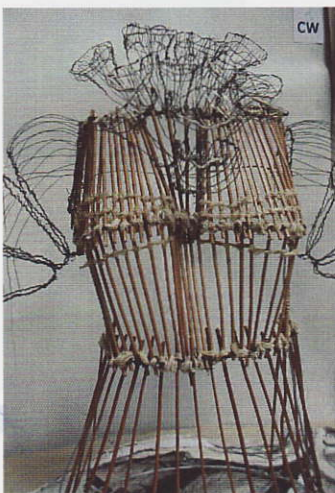
Ed Lawrence. Wire and Sineu

Machine embroidery, acrylic, pen. Sussex Downs College

"Establishing a relationship between the cultural impositions and the relentless surge of organic growth, this triptych is in the story telling form of the continual give and take for domination between mankind and the forces of the natural world."



Tim Brown. Conceptual Self Portrait



Natalie Denyer. Wicker and Wire



Ed Lawrence. Wire and Sineu



Jafer Yusef. Guitar



Alie Greig-Mackintosh.
Urban Camouflage

Holly Jackson. Ocean Earth

Mixed media. Uckfield Community College

"Shows the beauty of nature in a progression from ocean to earth, using mixed media, and found objects to express form and textures found in nature."

Rachel West. Inside My Head

Found objects, mixed media. Uckfield Community College

"My sculptural head is a culmination of personal experiences and memories which are reflected by the use of mixed media and 'objets trouves' within it. The profile of the woman's head stems from my visit to Ghana and my studies of African masks."

Alexander Hough. Word

Lithographic aluminium, acrylic, steel, spray paint. Uckfield Community College

"A mixed media composition that draws upon the expression and forms of words to portray their depth and meaning in and out of context. It is to be in an urban environment to contrast with directly influencing information of one's travel."

Simone Stevens. Personal Allergies

Mixed Media. Uplands Community College

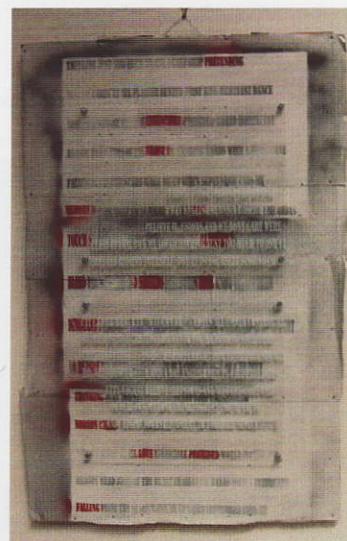
"These shelves were created in response to my personal allergies which led me into researching disease and infection. Damien Hurst inspired my ideas as well as studying the images of bacteria."



Holly Jackson. Ocean Earth



Rachel West. Inside My Head



Alexander Hough. Word



Simone Stevens. Personal Allergies

"Perhaps you haven't noticed . This is how it is."

Lee Miller

'A' LEVEL

Carrie Ann Stapley. Freedom

Filsham Valley School

Photographic response to Freedom theme for examination.



Carrie Ann Stapley. Freedom

Daniel Mann. Untitled

Filsham Valley School

Photography piece in response to Escher.

Charlotte Allison. Exhumation

Heathfield Community College

"My work was the idea of a metamorphosis garden, illustrating the process of my Dad digging it out. The piece was inspired by David Hockney. It shows a change through time and leaves people guessing what the gap will be filled with."

Francesca Sims. Once Upon A Time

Photo collage, Heathfield Community College

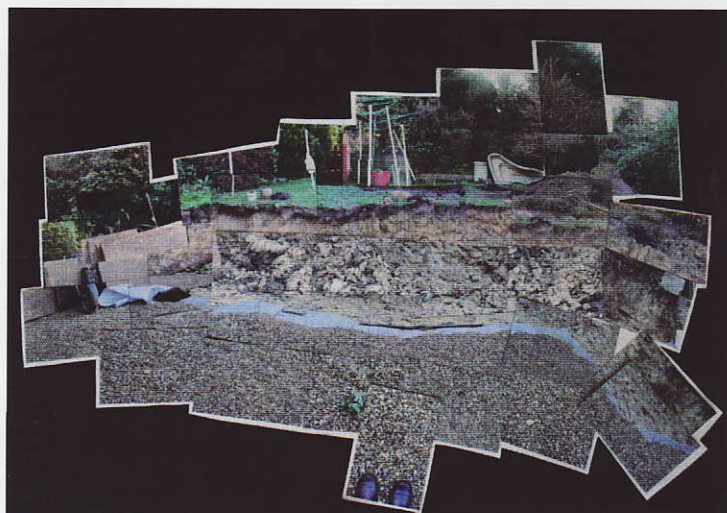
"My fairytale book illustrates different fairytales as sequences of images inspired by the work of Duane Michals. I aimed to explore the concept behind each image to portray the hidden message behind each tale."



Francesca Sims. Once Upon A Time



Daniel Mann. Untitled



Charlotte Allison. Exhumation



Alice West. Freedom

Uckfield Community College

"Researching freedom and exploring such concepts - freedom to escape or not to escape - through walls, gates, and fences."

Edward Delauney. Warning to Binge Drinkers

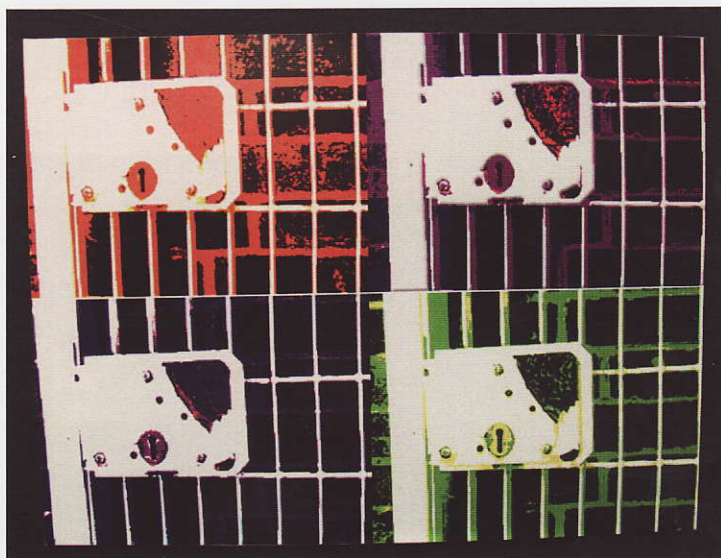
Uplands Community College

"The work was created in response to the growing concern of teenagers binge drinking. My work tells the story of a night's events and studying the cause and effects of binge drinking."

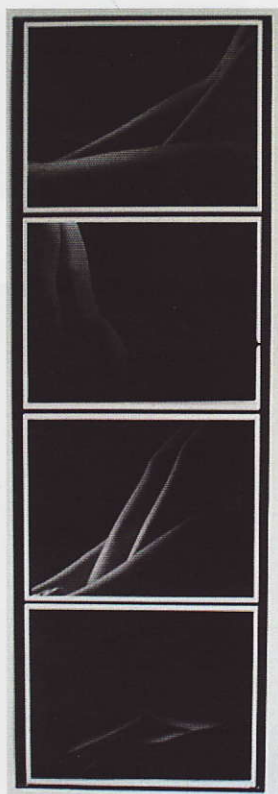
Genevieve Whitehead. Limbs

B/w print. Bexhill College

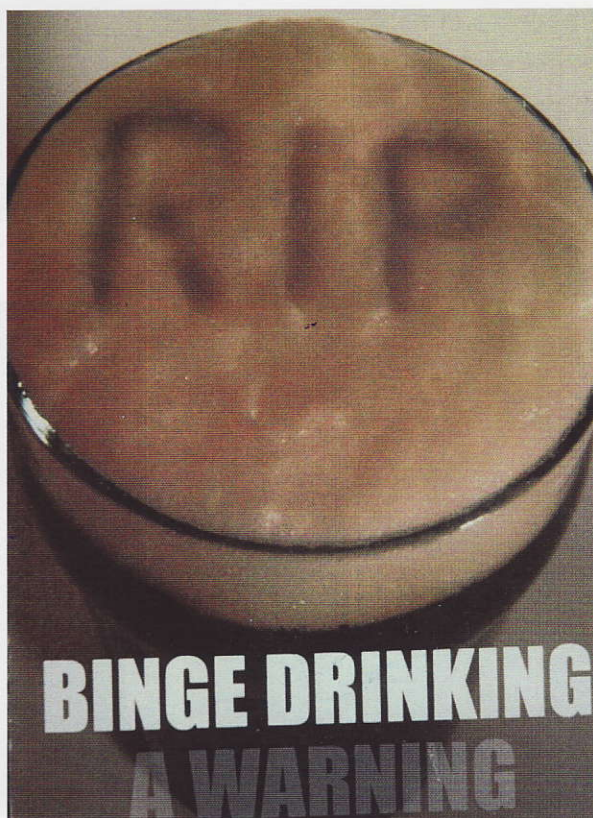
The body has been a visual subject for many photographers. This photograph aims to show how delicate lines and rhythms can be found within the total qualities of the image. The lighting and the cropping mean that the viewer has to think about which limbs have been photographed.



Alice West. Freedom



Genevieve Whitehead. Limbs



Edward Delauney. Warning to Binge Drinkers

The Fabric Shop

"Of course, there will always be those who look at technique, who ask 'how,' while others of a more curious nature will ask 'why'. Personally I have always preferred inspiration to information."

Man Ray

GCSE

Jessica Stocks. Woodland Dress

Various. Beacon Community College

An extensive investigation of surface qualities was the inspiration behind this sculpture. Source materials such as pine cones, bark and moss were gathered and explored through drawings and various mixed media processes.

'A' LEVEL

Chloe Reynolds. Recycled Jacket

Various. Beacon Community College

Based on the theme of 'Deconstruct/ Reconstruct' and inspired by the innovative use of recycled materials found in a number of contemporary designers' work, this denim jacket has been reworked after extensive experiments with a range of traditional and non conventional textile media.

Emily Shepherd. Natural Lines

Wire, silk screen, hand/machine Embroidery, fabric paint. Sussex Downs College

"This is a fashion garment full of surprise. There is a play of strength and transparency, structure and ornament. The corset and spiral skirt constrain whereas the delicate leaves freely draw a pattern across the surface"

Claire Ashdown. What Is Beautiful?

Fabric. Heathfield Community College

"In today's society size really does matter. I myself have been guilty of trying to achieve the beauty we are fed by the media and I also have friends who have been affected by this constant striving for 'perfection' The purpose of this piece is to challenge what is "beautiful", what makes someone beautiful and who decides."



Chloe Reynolds. Recycled Jacket



Emily Shepherd. Natural Lines



Jessica Stocks. Woodland Dress



Claire Ashdown.
What Is Beautiful?

The Fabric Shop

Leanne Strudwick. Puffalump

Various. Uckfield Community College

"Having experienced for the last two years a considerable amount of pain I decided that when working on this time I needed to reflect this suffering. "Puffalump" was my childhood toy reflecting my carefree days."



Leanne Strudwick. Puffalump

Rosa Harvest. 1950's Dress

Fabric. Uplands Community College

"I decided to make a 1950's style dress with a modern take on it. As the modern take on it I used the influence of Keith Haring a New York graffiti artist, I chose these themes because I really like both of them and they contrast each other."

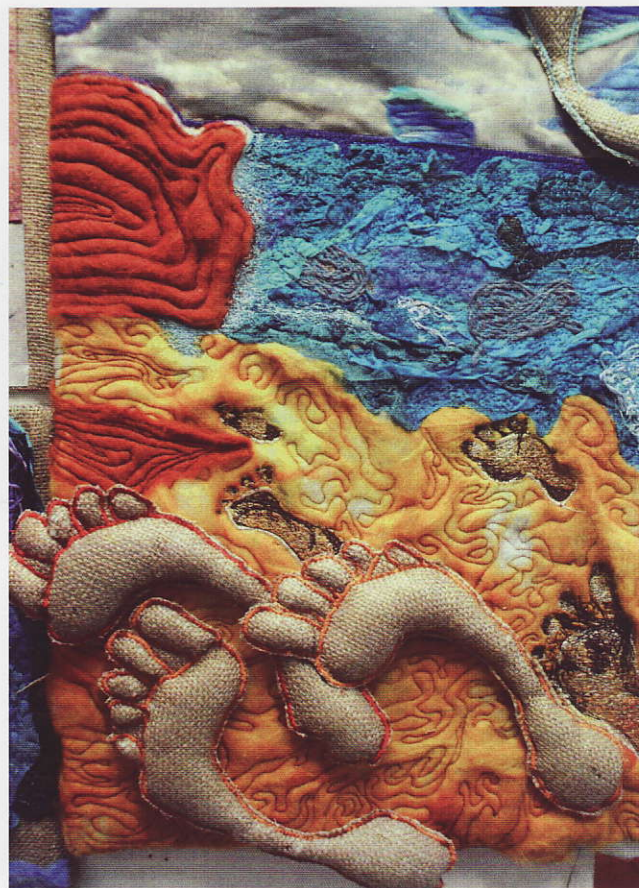
Eleanor Hawkins. Beach Walk

Mixed textile processes. Bexhill College

Successfully combining a wide range of textile techniques – felting, dying, transfer printing, machine embroidery and appliqué to produce a piece inspired by Robinson Crusoe and Pirates. Texture and vibrant colour along with humour are key elements in this piece.



Rosa Harvest. 1950's Dress



Eleanor Hawkins. Beach Walk

*"On my notebooks from school, On my desk and the trees,
On the sand on the snow, I write your name"*

Paul Eluard

GCSE

Gamzi Sanli.

Mixed media. Filsham Valley School

This exploration traces Gamzes' ideas following a visit to the Victoria and Albert Museum.

'A' LEVEL

Kathryn Vince. Enchanted

Environment

Heathfield Community College

"Work in my Sketchbook is based on the theme of enchantment. I looked at different artists who had the enchanted feel to their work. The two artists/photographers that inspired me the most were Peter Fischli and David Weiss."

Rosanna Vaughan. Environment

Various. Uplands Community College

"I explored how a negative environment affects the life span and quality of a human, using artists such as Egon Schiele and Munch to convey distorted and distressed figures. My project had originally begun with a much broader approach experimenting with media and testing all possibilities."



Rosanna Vaughan. Environment



Kathryn Vince. Enchanted Environment



Gamzi Sanli.

COMING SHORTLY

FARLEYS YARD TRUST

Presents a LEE MILLER Double Bill



Discovering The Art of Lee Miller

Illustrated talk

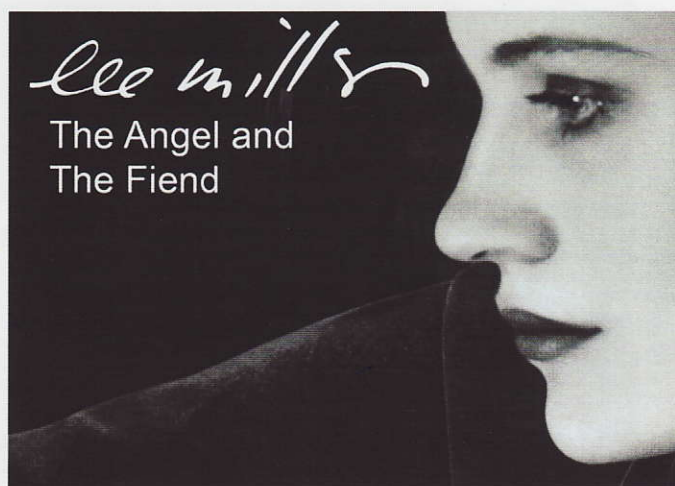
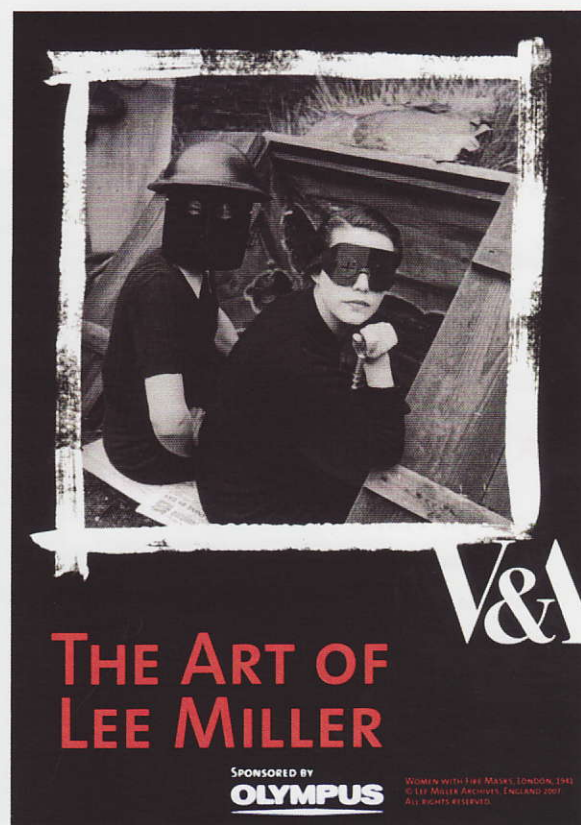
Mark Haworth-Booth, the internationally renowned professor of photography and the curator of the exhibition *The Art of Lee Miller* currently at the Victoria and Albert Museum, London in conversation with Antony Penrose, Lee Miller's son and the director of the Lee Miller Archive. The exhibition *The Art of Lee Miller* has been four years in the making, and Haworth-Booth and Penrose will recount some of the many discoveries made in the process of curating the exhibition.

INTERVAL

The Angel and The Fiend

A one act play by Antony Penrose

The life of Lee Miller presented as a reading for five voices set to a constant stream of images. Letters, manuscripts and remembered conversations by Lee Miller, Roland Penrose, Man Ray, David E. Scherman and Antony Penrose are authentic statements of those portrayed. Lee Miller is played by her grand daughter Ami Bouhassane and Antony Penrose by himself.



25th November All Saints Centre

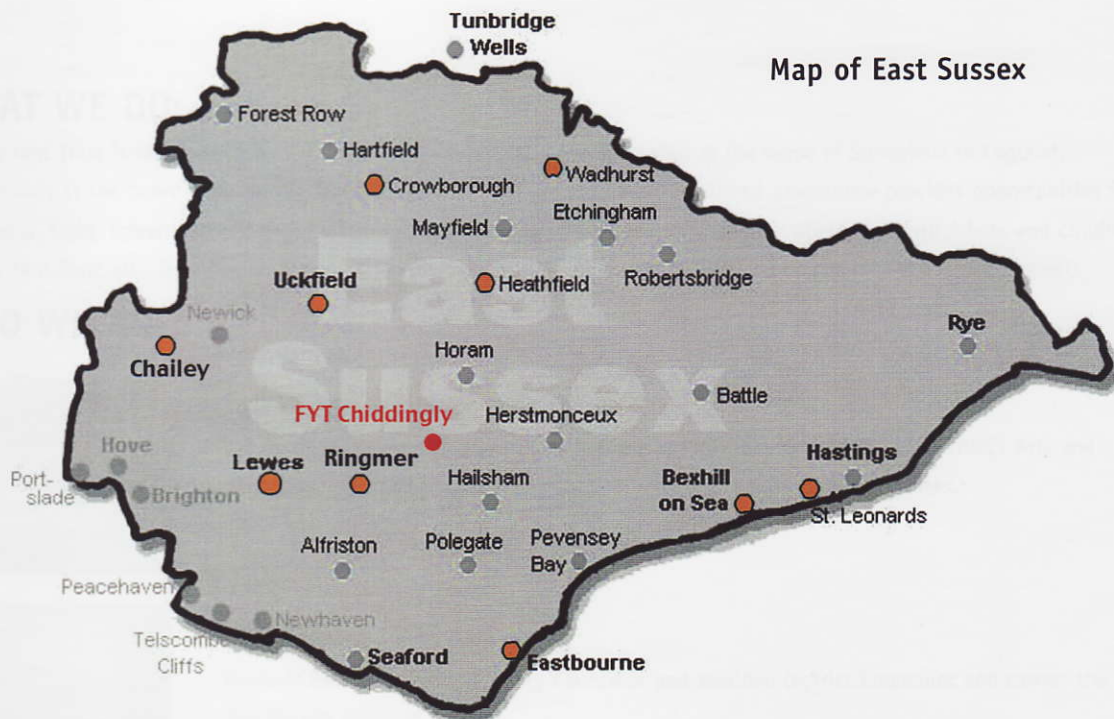
Friars Walk, Lewes - 3pm to 6pm

Tickets from: Laport's, 1 Landsdown Place, Lewes. Tel: 01273 472466
and Lewes Travel, Station Road, Lewes. £8, Concs £6.

2nd December The Old Courtroom

118 Church St, Brighton, BN1 1UD - 3pm to 6pm

Tickets from the Dome Box Office - www.brightonticketshop.com - £8, Concs £6.



Farleys Yard Associate Schools Group: Participating Schools and Colleges.

Beacon Community College ~ East Beeches Road, Crowborough, TN6 2AS
Head of Art, June Baird

Bexhill College ~ Penland Road, Bexhill-on-Sea, E.Sussex, TN40 2JG
Emma Rawson

Bexhill High School ~ Down Road, Bexhill-on-Sea, TN39 4HT
Jo Symons

Chailey School ~ Mill Lane, South Chailey, Lewes, BN8 4PU
Head of Art, Dawn Johnson

Filsham Valley School ~ Edinburgh Road, St Leonards-on-Sea, TN38 8DA
Head of Art, Mandy Holbeche

Heathfield Community College ~ Cade Street, Heathfield, TN21 8RJ
Director of Art, Andrew Brookes; Kelly Davies

Ringmer Community College ~ Lewes Road, Ringmer, Lewes, BN8 5NE
Head of Art, Lindy Nyaseme; Colette Lethbridge

Sussex Downs College ~ Mountfield Road, Lewes, E. Sussex BN7 2XH
Visual Arts Co-ordinator, Chris Mansell; James Dibiase

Uckfield Community College ~ Downsview Crescent, Uckfield, TN22 3DJ
Head of Art, Clare Summons; Rachell Johnson; Tess Deverill

Uplands Community Technology College ~ Uplands, Wadhurst, TN5 6BA
Head of Art, Julie Court

This Catalogue is published by Farleys Yard Trust and printed by Sumfield and Day.
Our thanks go to Nigel Allchorn and his team for their support.
Catalogue compiled and edited by Noël Hardy.

WHAT WE DO:

Farleys Yard Trust is an imaginative Arts and Educational centre being created at the home of Surrealism in England. Education is at the heart of all we do. The Farleys Yard Trust's year-round educational programme provides opportunities for workshops, talks, screenings and drama presentations throughout East Sussex and wider afield, for both Adults and children. Farleys Yard Trust also develops partnerships in response to educational, corporate and community needs and requests.

WHO WE ARE:



Ian Chance. *Director*

Ian is leader of the Farleys Yard Team and is responsible for initiating the Trust's Arts and Education Programmes with associated resourcing of Projects and activities.



Cllr. Sylvia Tidy. *Chairman*

Sylvia is both East Sussex County Councillor and Wealden District Councillor and carries the flag for the Board of Trustees.



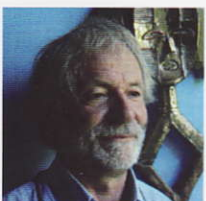
Tony Penrose. *Founder Trustee*

Son of Roland Penrose and Lee Miller is founder of the Farleys Yard Trust, our principal advocate, guardian of the artistic legacy at Farleys and inspirational pioneer.



Brenda Longley. *Honorary Company Secretary*

Brenda keeps the Farleys Yard Trust financial and business affairs in good order.



Noël Hardy. *Project Co-ordinator*

Noël is the first point of contact and co-ordinates the arts and education programme activities, including projects plus liaisons with schools and colleges in support of our educational partnerships.

Where you find us:

If you are interested in finding out more or wish to support the work of the trust please contact us at:

Farleys Yard Trust Ltd
Farley Farm House
Chiddingly
East Sussex BN8 6HW

Telephone: 01825 872230
Fax: 01825 872733
Email: farleysyardtrust@btinternet.com
Website: www.farleysyard.co.uk
www.leemiller.co.uk
www.rolandpenrose.co.uk